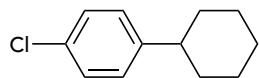


$^1\text{H}$  NMR (500 MHz,  $\text{CDCl}_3$ )  $\delta$  7.26 – 7.22 (m, 2H), 7.14 – 7.11 (m, 2H), 2.47 (tt,  $J = 8.5, 2.9$  Hz, 1H), 1.89 – 1.79 (m, 4H), 1.77 – 1.70 (m, 1H), 1.37 (td,  $J = 9.2, 2.4$  Hz, 4H), 1.24 (dtq,  $J = 12.6, 9.3, 3.0$  Hz, 1H).



1-chloro-4-cyclohexylbenzene (3)

